

Archeoplanetography

Archeoplanetography:

A complex, multi-faceted, illustrated historic information system embedded within the landscape of the planet, portraying the dominant species influencing that area.

Image Landsat
Data SIO, NOAA, U.S. Navy, NGA, GEBCO
Image IBCAO

Google earth

16°14'28.22" S 56°33'15.24" W eye alt 7169.33 mi

memecenter.com 

We have been asked to provide more outlined and unoutlined archeoplanetography images so that learning can be facilitated.

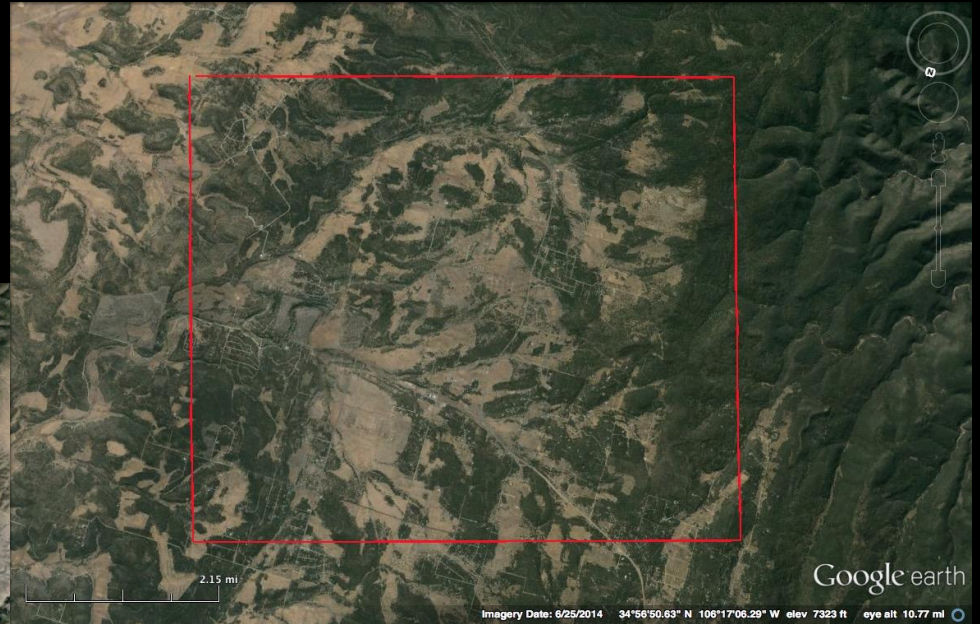
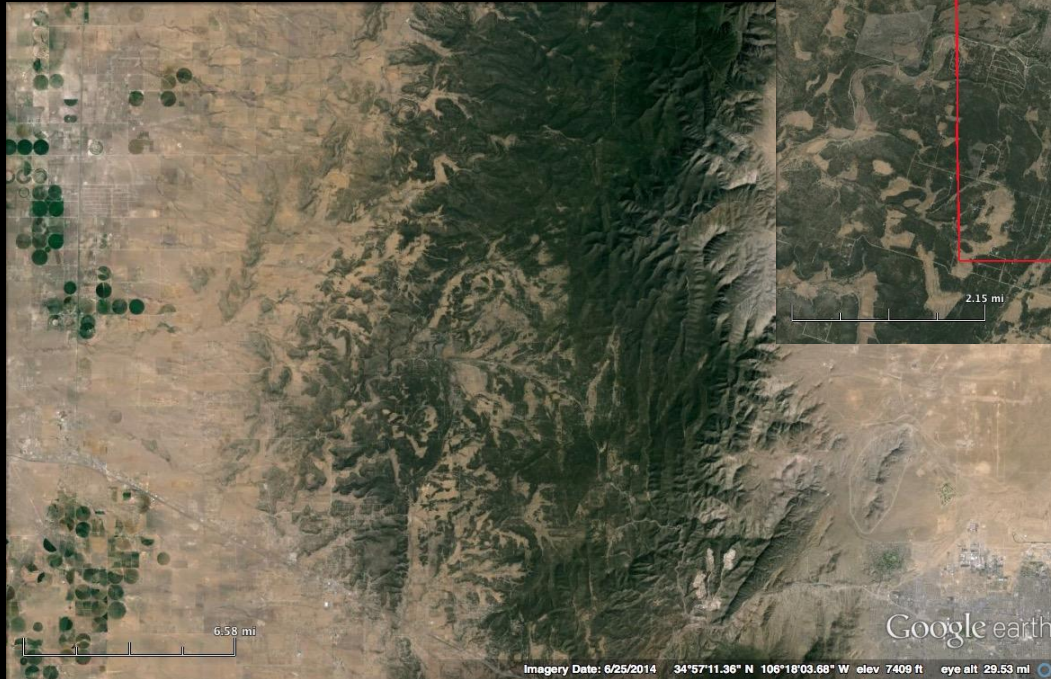
These outlined and un-outlined images have been taken directly from Google Earth, Google Moon and Google Mars.

The screen shots were not altered or tampered in any way.

Many of these contain the latitude and longitude information in tiny white print at the bottom of the screen shot.

Currently they are in no particular order.

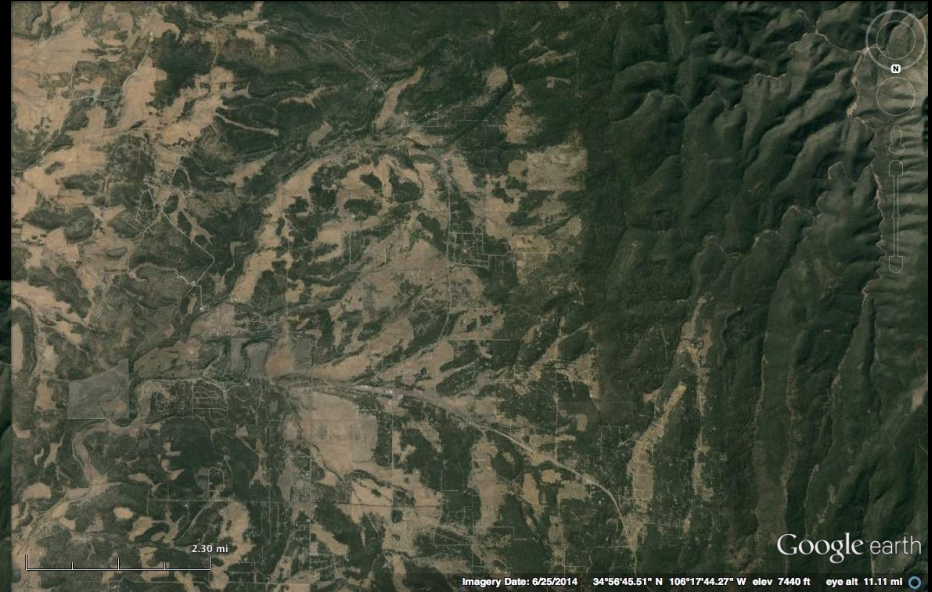
“Babe” (so nicknamed after the fictional Babe the Blue Ox of Paul Bunyan fame.)



This was the first archeoplanetography image shown to our telepath in late November of 2014.

“Babe”

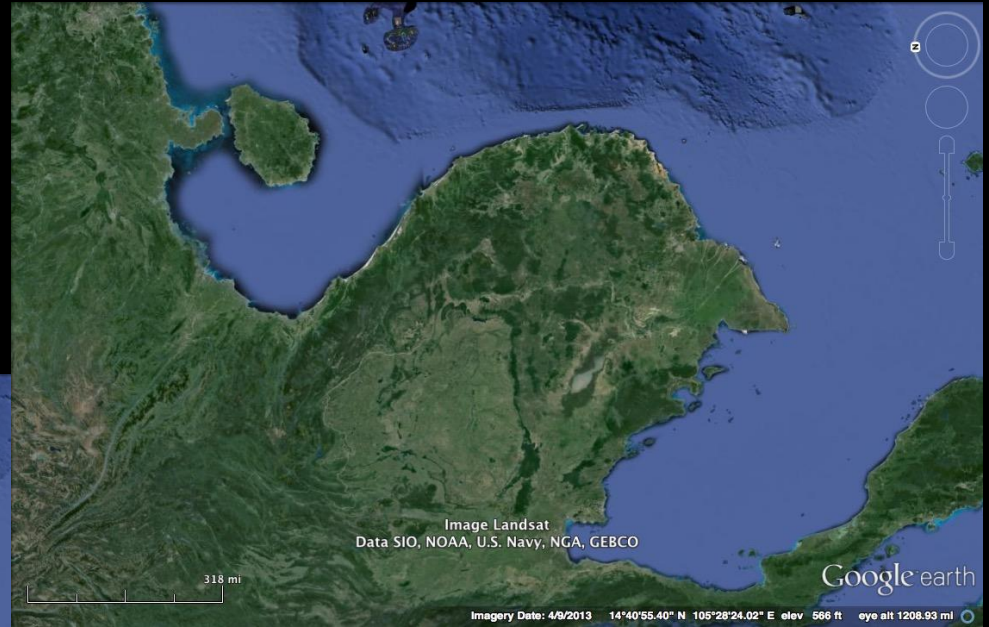
Manzano Mountains, Albuquerque, NM



34°56'15.50"N 106°
15'44.57"W
North = 6:00
Size: 6 x 6 miles (8 x 8 km)

Vietnam's Elephant

Location: 14 40'55.40"N 105 28'24.02"E



Eye alt 1208.93 miles North = 9:00
Size: 777 miles (1250 km) nose to ear

Albuquerque, NM

Find the eye at:

$35^{\circ} 6'55.30''\text{N } 106^{\circ}13'59.45''\text{W}$

North = 12:00

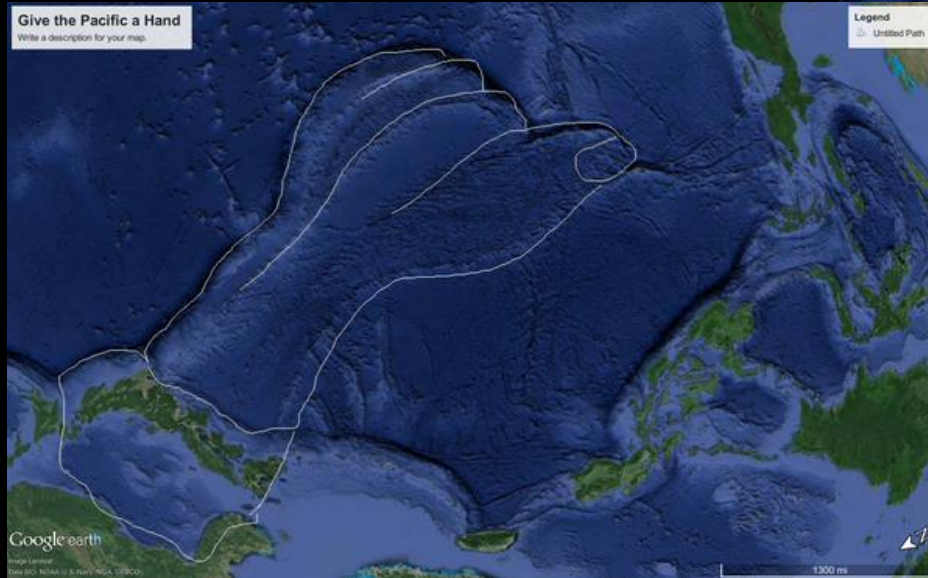
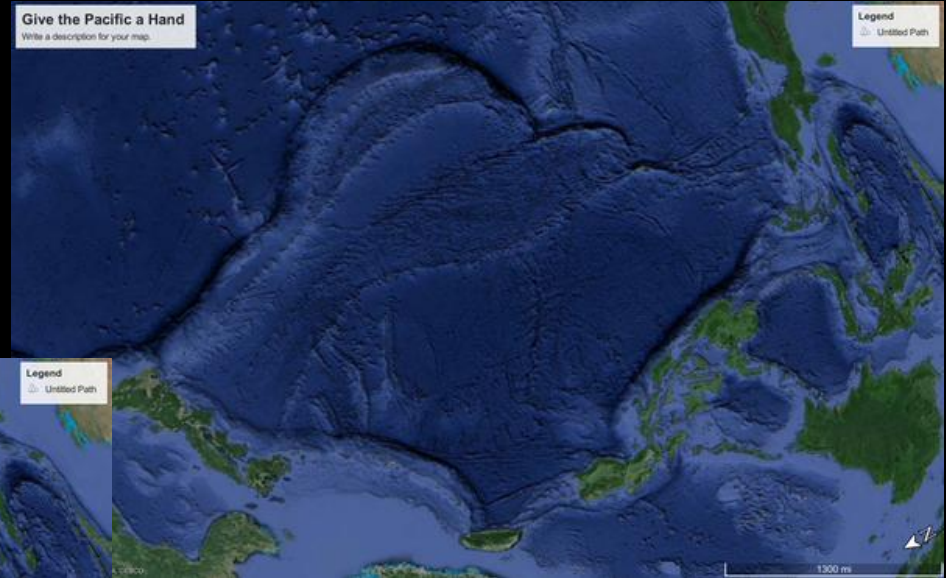
Length = 12 miles/19 km



Northwestern Pacific Ocean

Find the thumbnail at:

8°37'29.52"N 135°47'12.74"E



North = 8:00

Back of the hand width:

900 mi/1445 km.

Length (thumb tip to cuff) 1

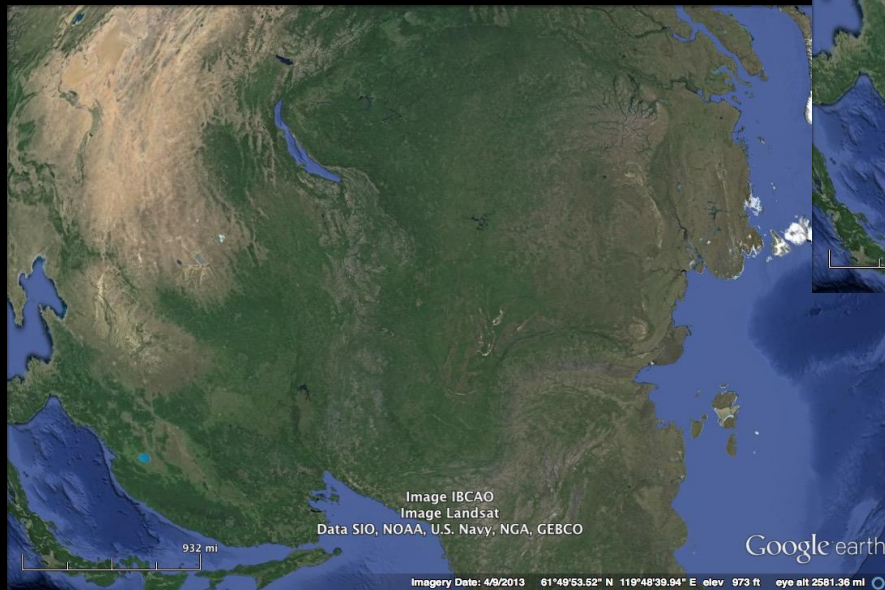
600 mi/2600 km.

Saudi Arabia's 6 fingered hand

Saudi Arabia's 6 Fingered hand
Width 260 mi/420 km
Length 800+ mi/1400+km



Northern Asia



67°38'52.46"N 102°14'11.73"E

Width 1375 miles/2220 km

North = 3:00

South America

24°52'15.07"S 49°23'26.17"W



North = 5:00

Size = Global

Southern Pacific

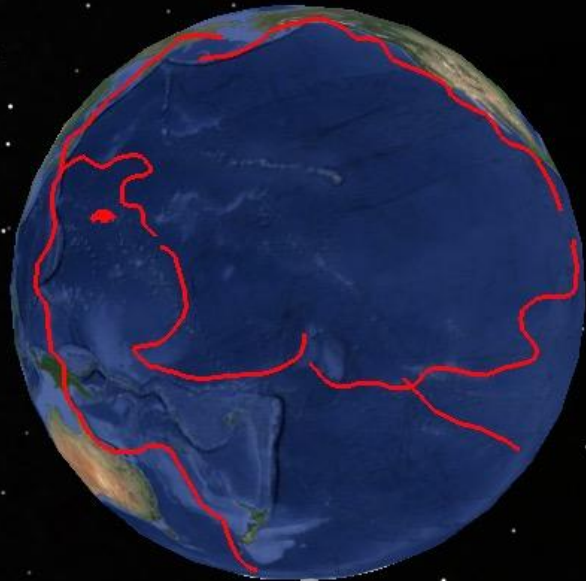


Image Landsat
Data SIO, NOAA, U.S. Navy, NGA, GEBCO

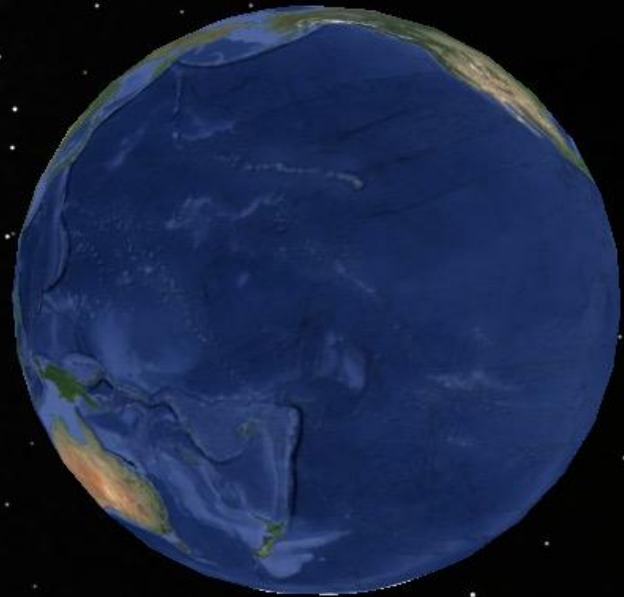


Image Landsat
Data SIO, NOAA, U.S. Navy, NGA, GEBCO

Mid Atlantic Ocean

South America is at 10:00,
North America 2:00, Africa 7:00, Europe 5:00
Greenland is the white bowl being offered.



Google earth



Mid Atlantic

Notice what appears to be a second profile standing to the right of the outlined figure.



Data SIO, NOAA, U.S. Navy, NGA, GEBCO
Image Landsat
Image IBCAO



Data SIO, NOAA, U.S. Navy, NGA, GEBCO
Image Landsat
Image IBCAO

Google

33°14'13.02" N 20°19'46.63" W eye alt 11

Africa is to the left at 9:00.
South America is at 2:00. Greenland is the white
island at 5:00.

Google earth

Eyeing Central America



Google

3°27'48.60" N 84°52'07.27" W eye alt 8

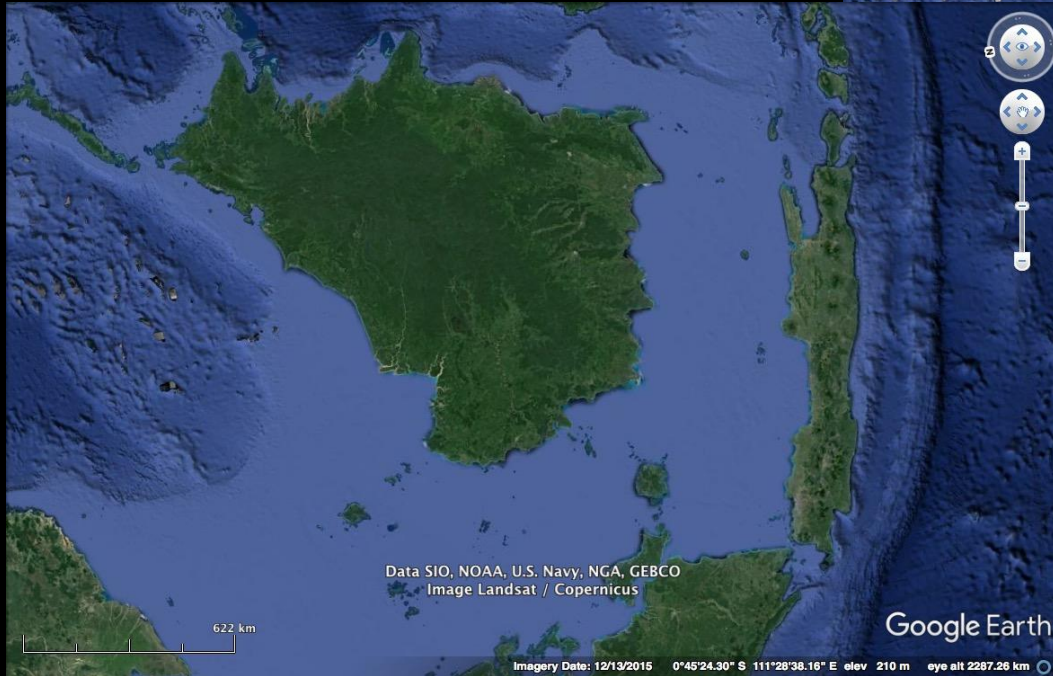
South America makes up the forehead. The lips are created by the Cayman Trough in the Caribbean.

Google earth

3°27'48.60" N 84°52'07.27" W eye alt 8523.33 m

Indonesia

Length 615 miles/990 km
North is at 9:00.



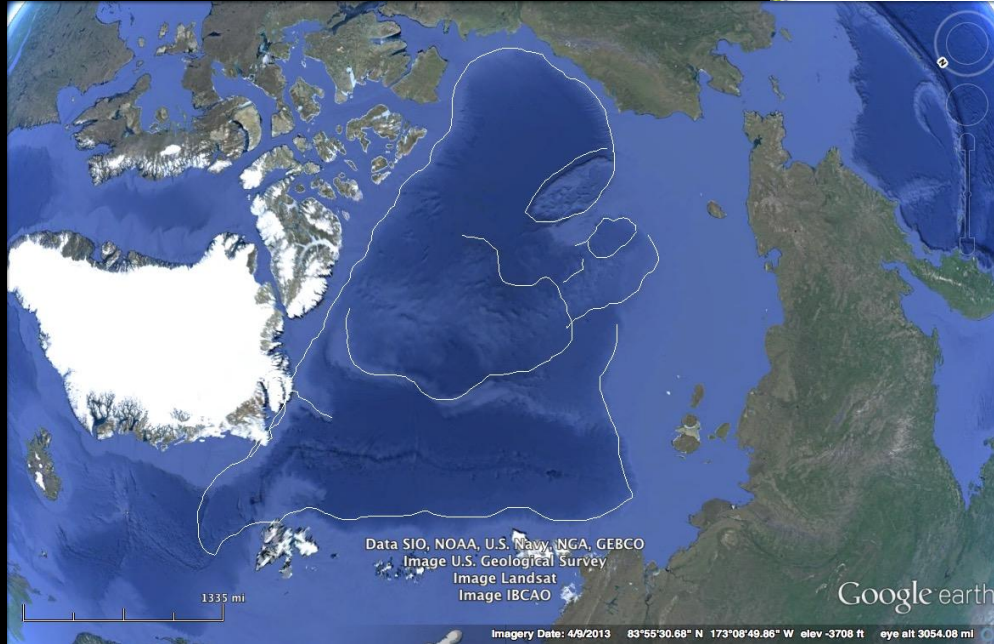
Mountains of China

33°40'15.09"N 105°35'49.82"E

North = 8:00 Bust Size = 50 x 50 miles



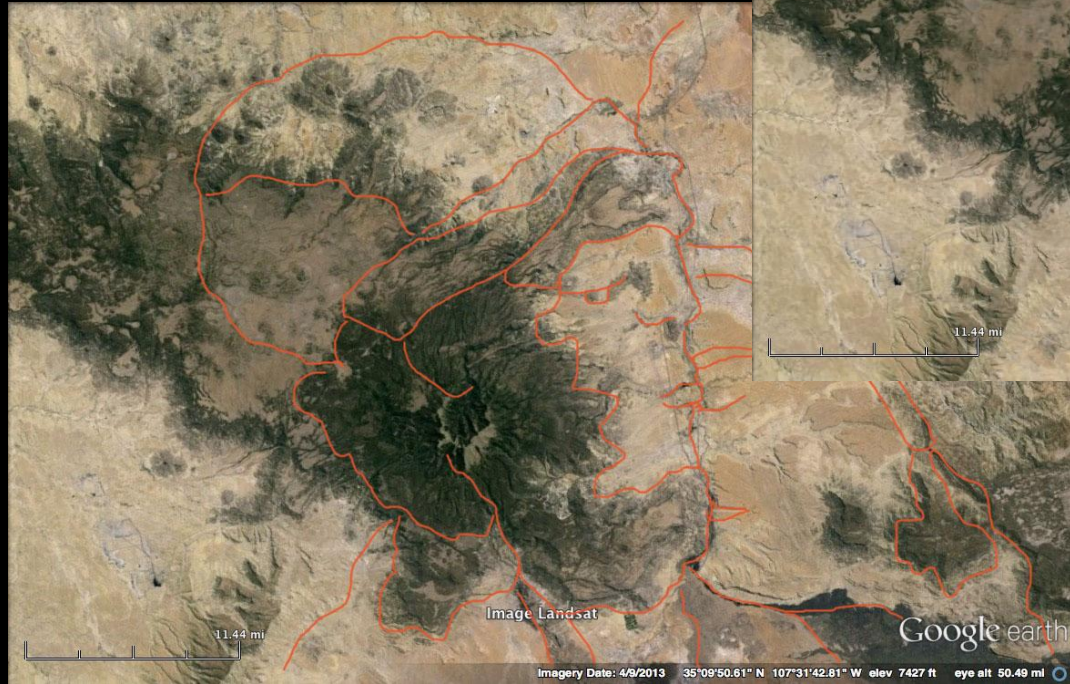
Arctic Ocean North of Greenland



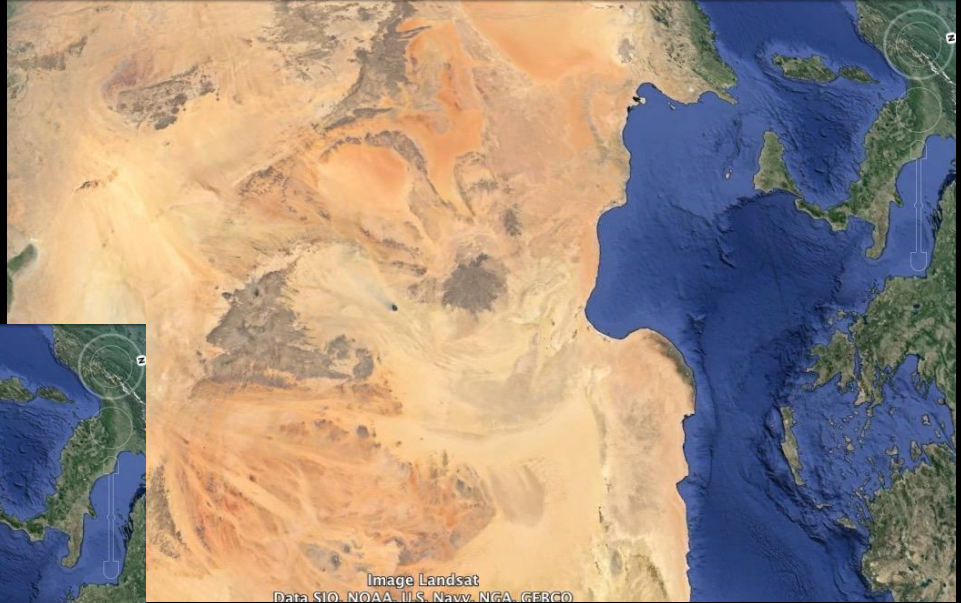
Uzbekistan

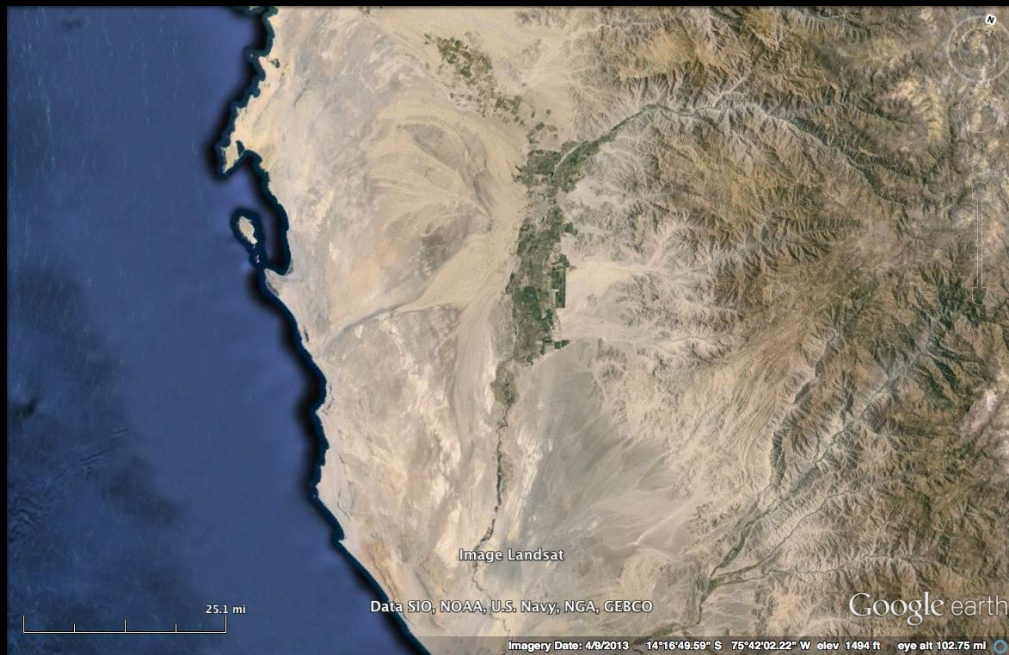
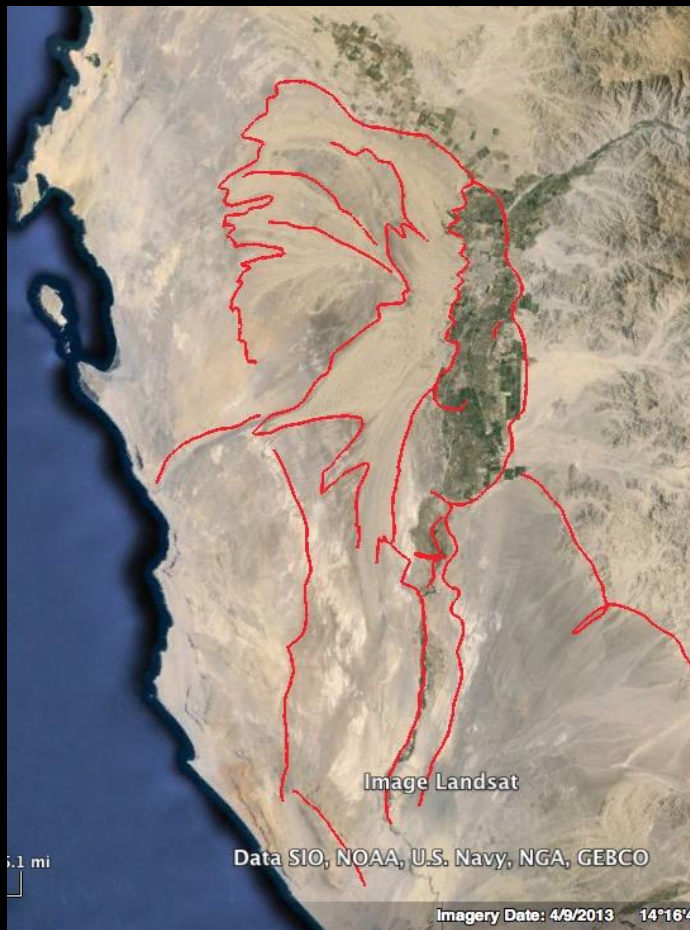


New Mexico Southwestern USA

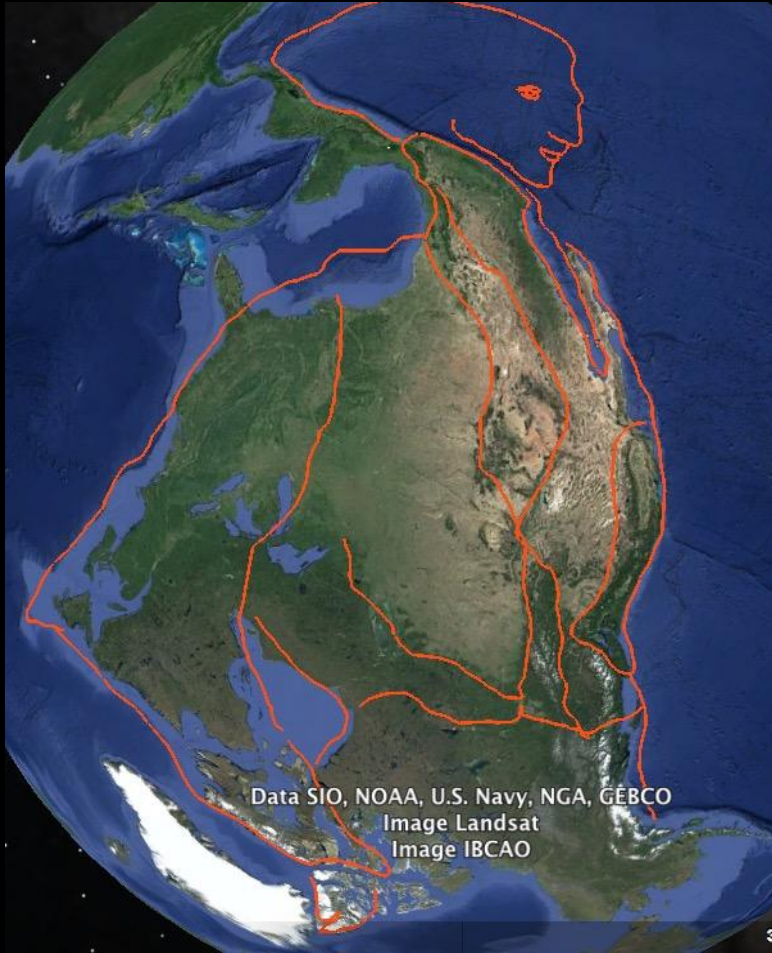


Sahara Desert Africa



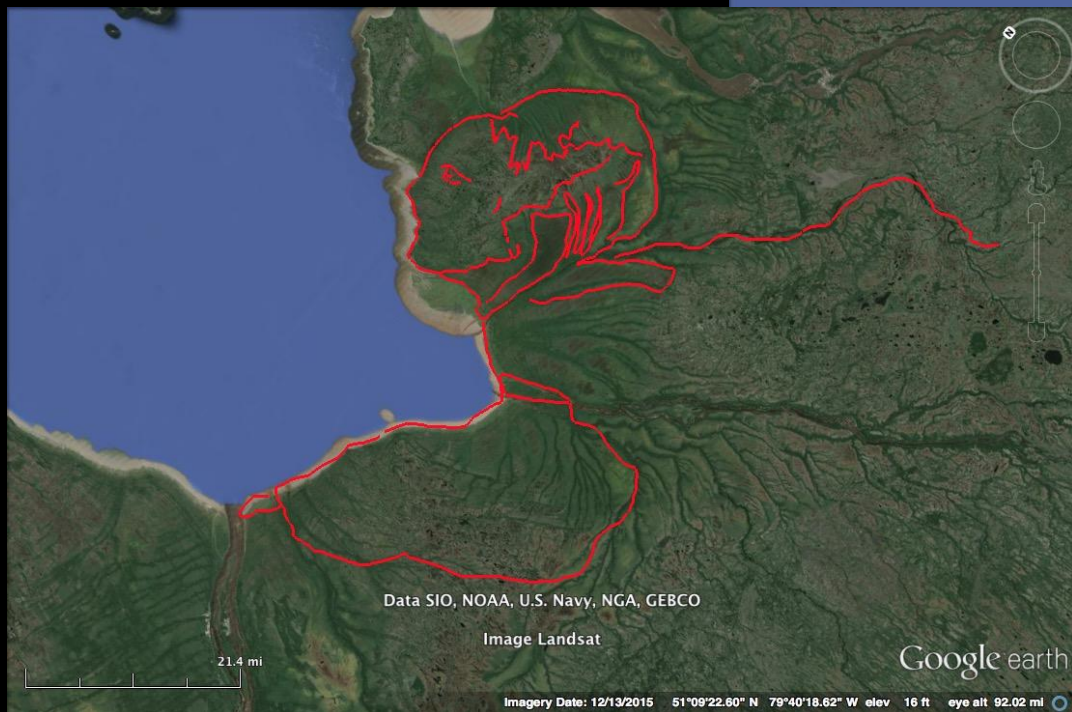


Nazca, Peru



North America

Hudson Bay Canada



Central Asia & India

Observing India
Write a description for your map.



Legend
- Untitled Path

Observing India
Write a description for your map.



Legend
- Untitled Path

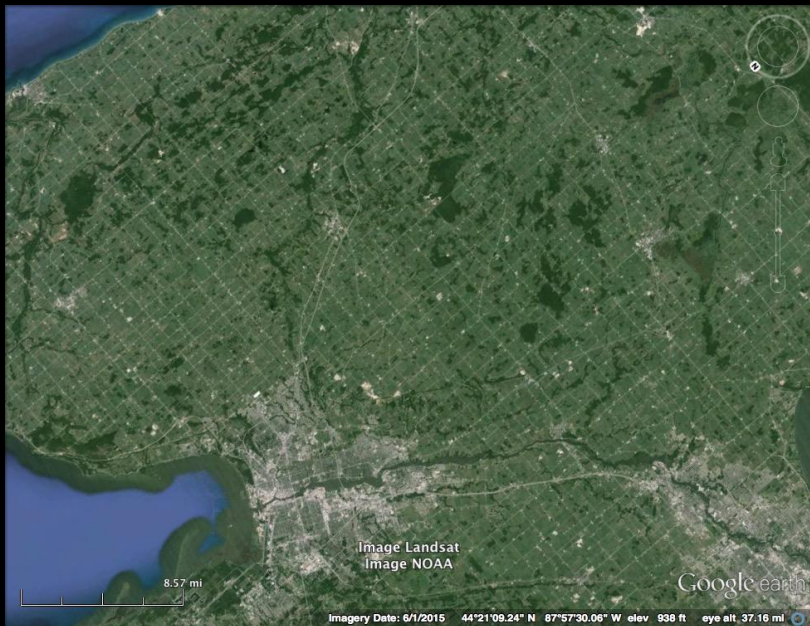


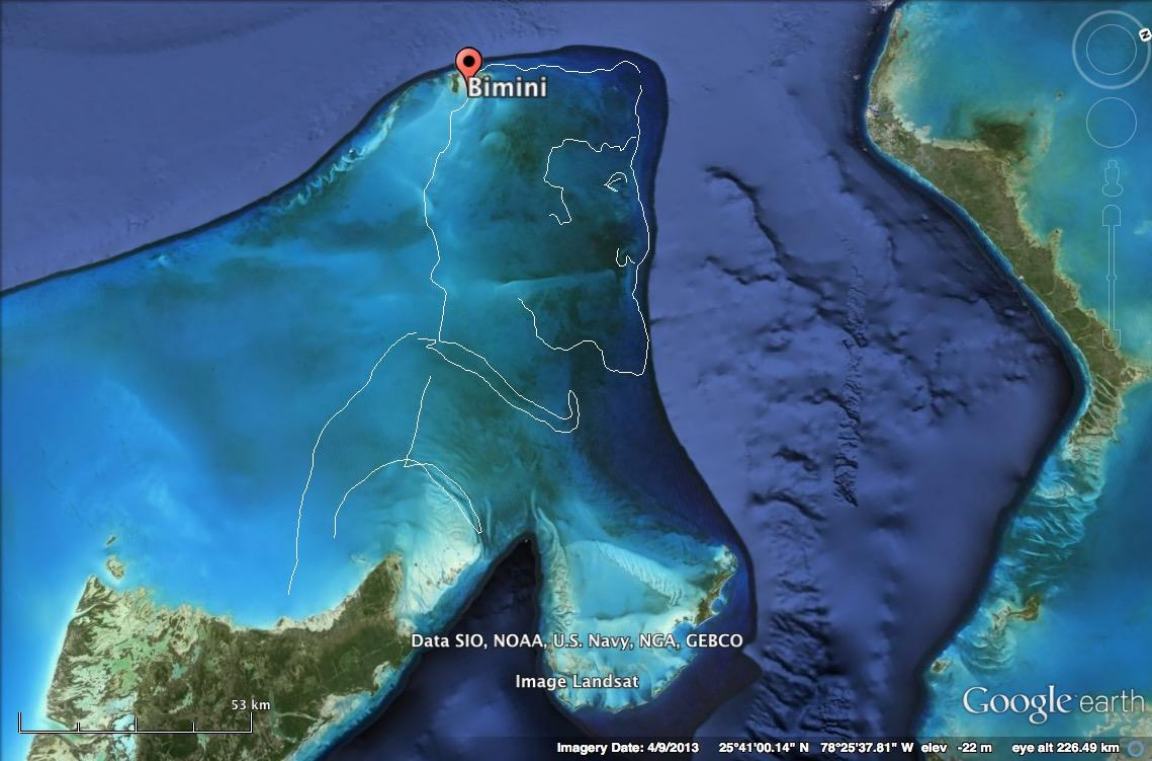
View from Space (Altitude: 6167 mi)



View from Space (Altitude: 6167 mi)

De Pere, Wisconsin USA





East of Bimini in the Atlantic



Ea in North America



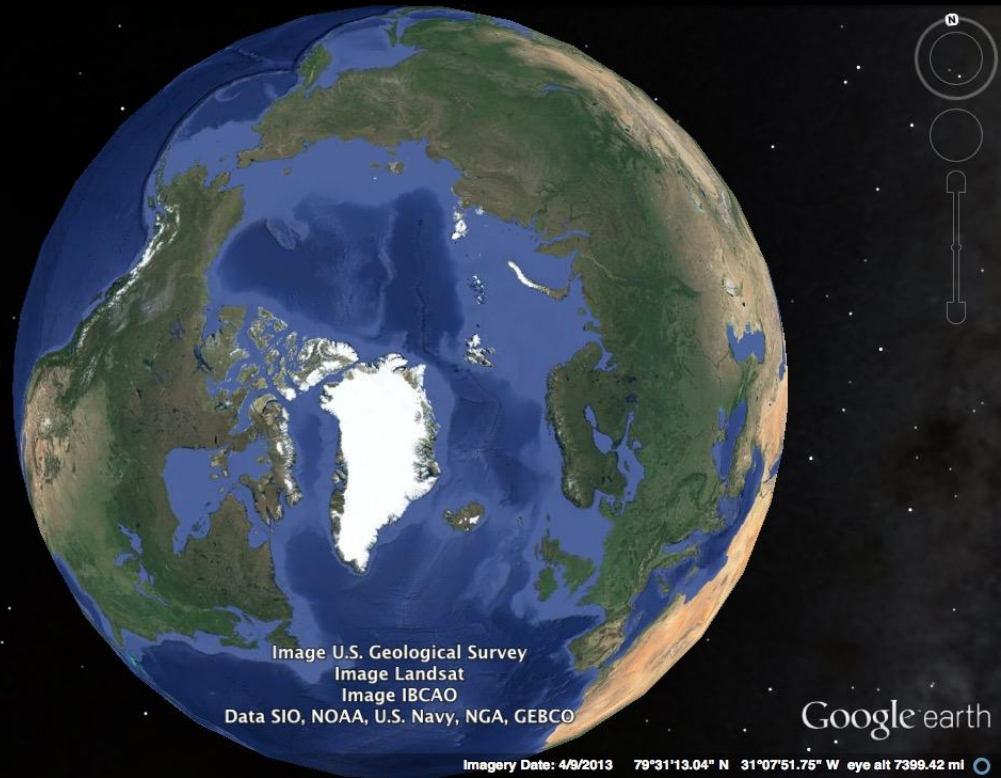
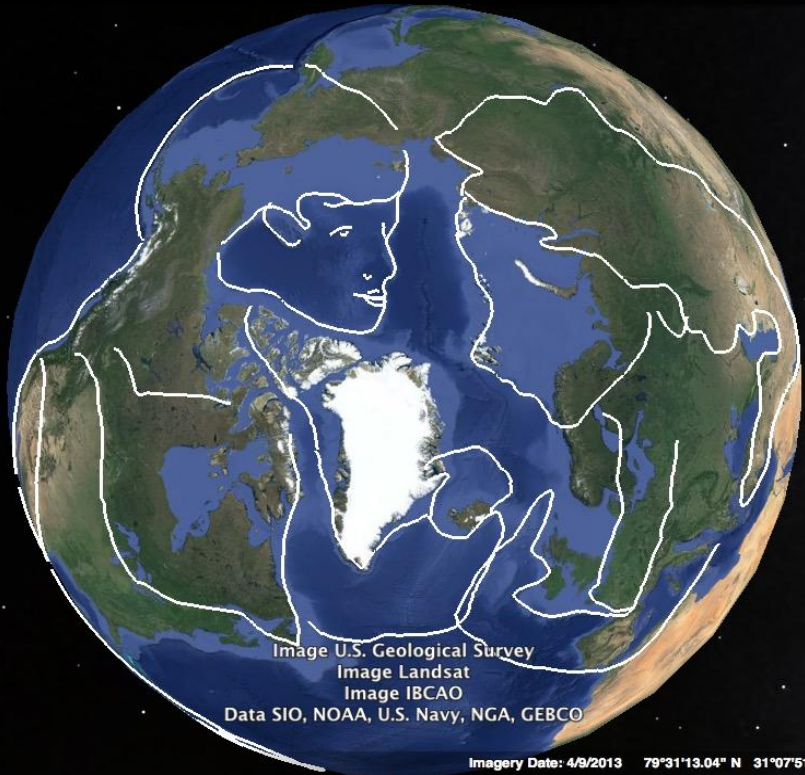
Western Atlantic

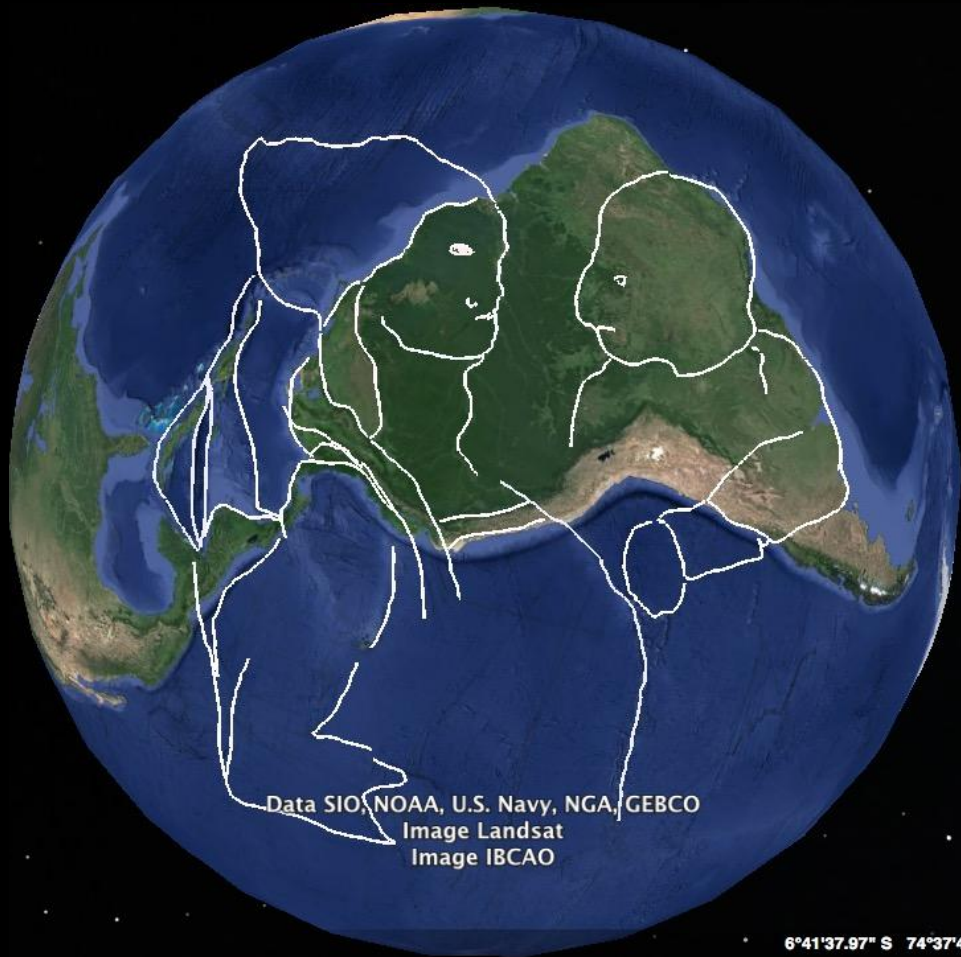


North Pole



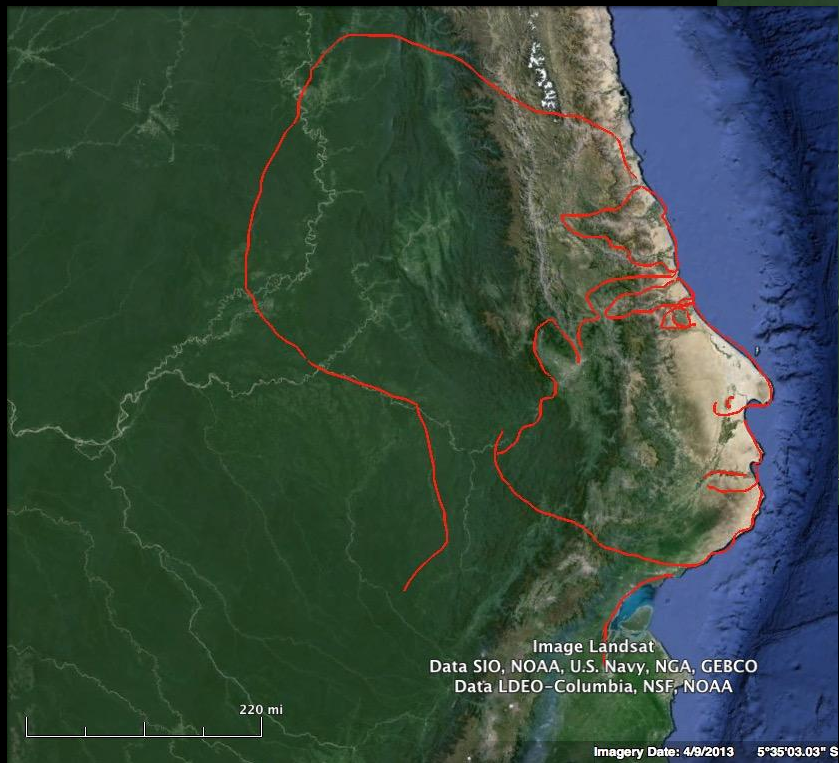
North Pole





Google earth

South America



South America

South America

South American Gazer

Write a description for your map.

Legend

📍 AI Gazer

👤 Untitled Path

South American Gazer

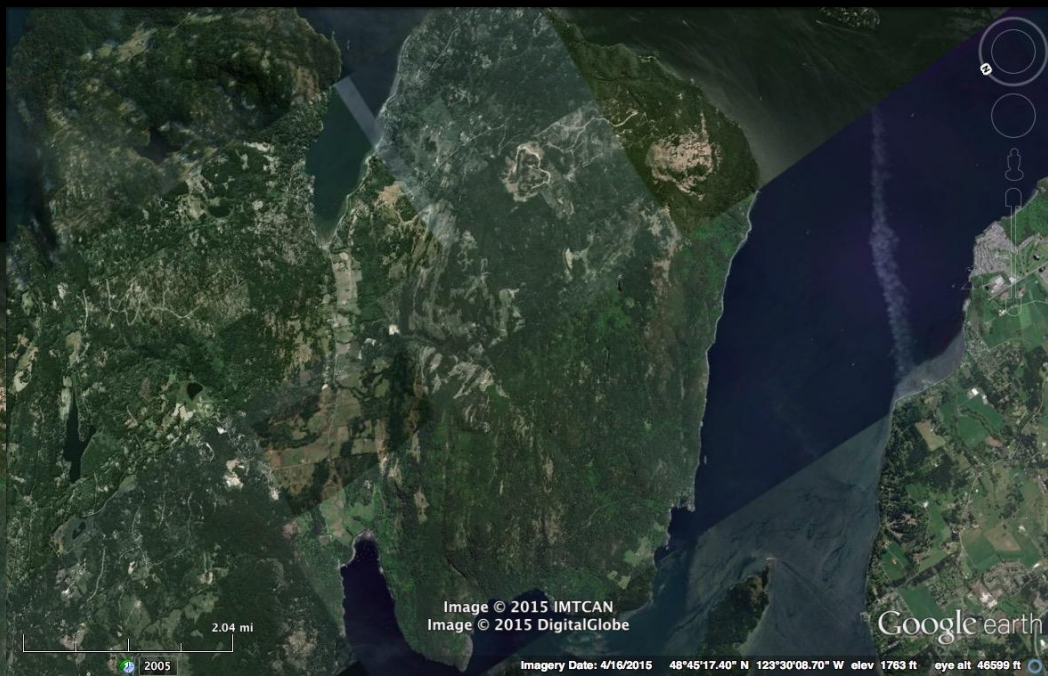
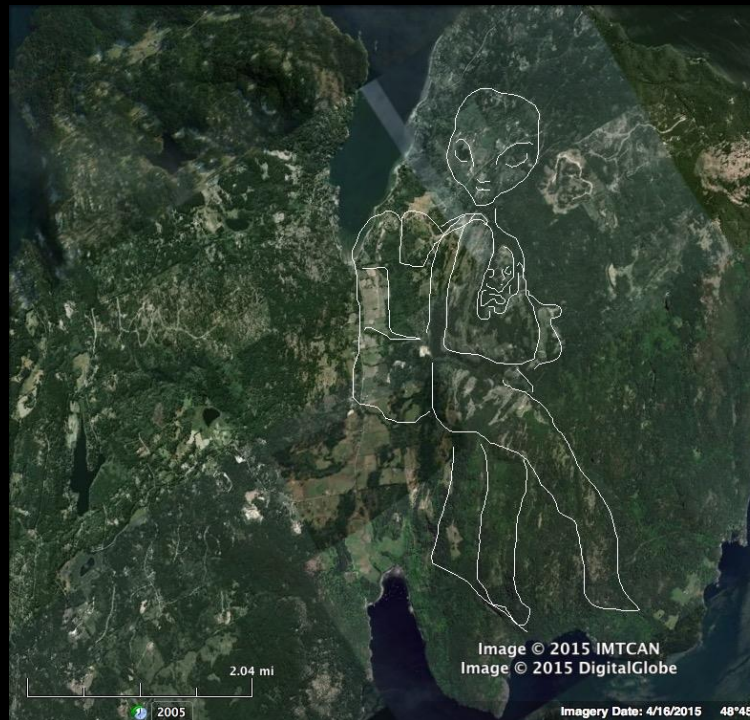
Write a description for your map.



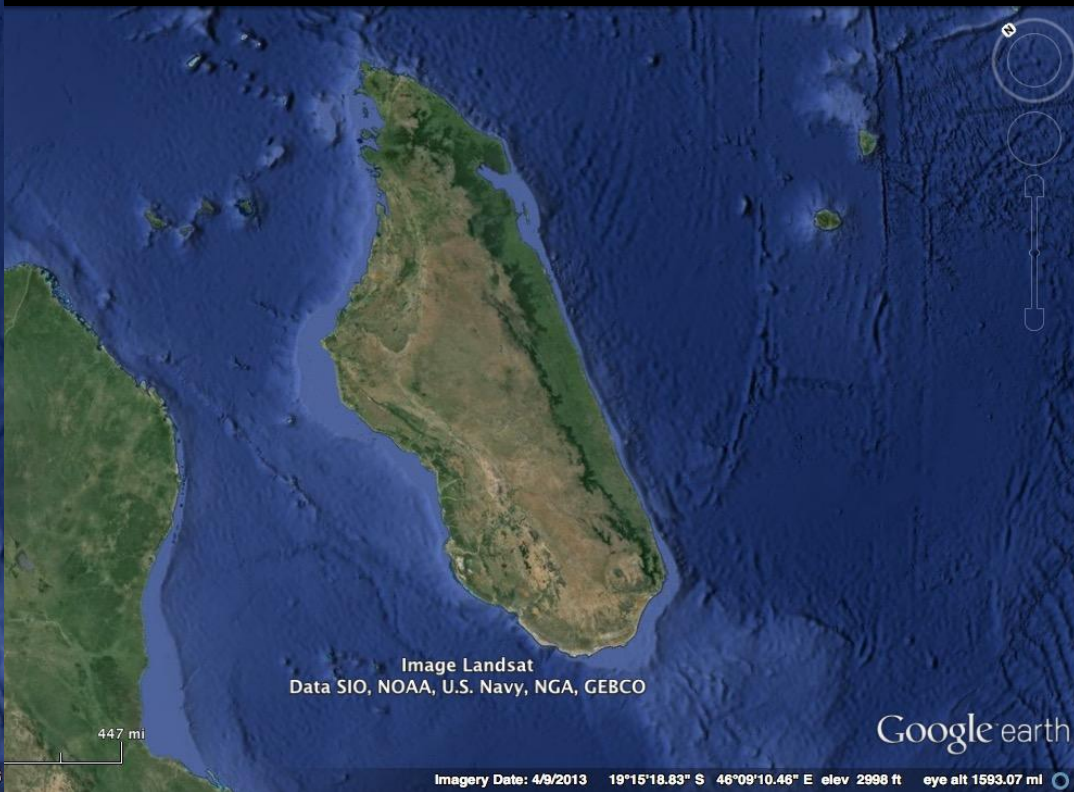
View from Space (Altitude: 5187 mi)



Salt Spring Island British Columbia, Canada



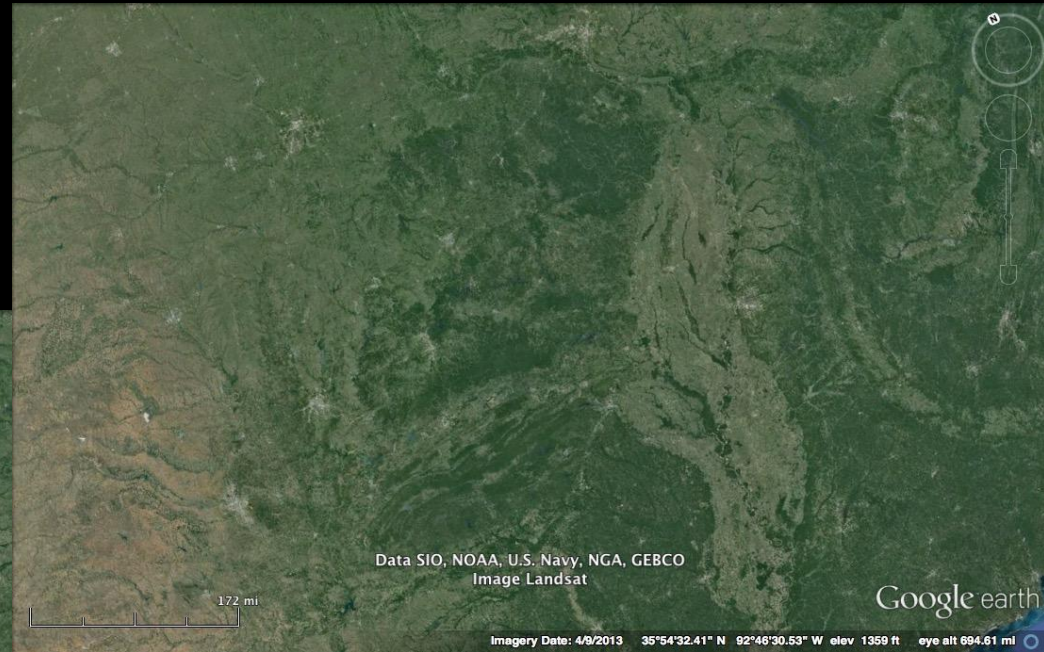
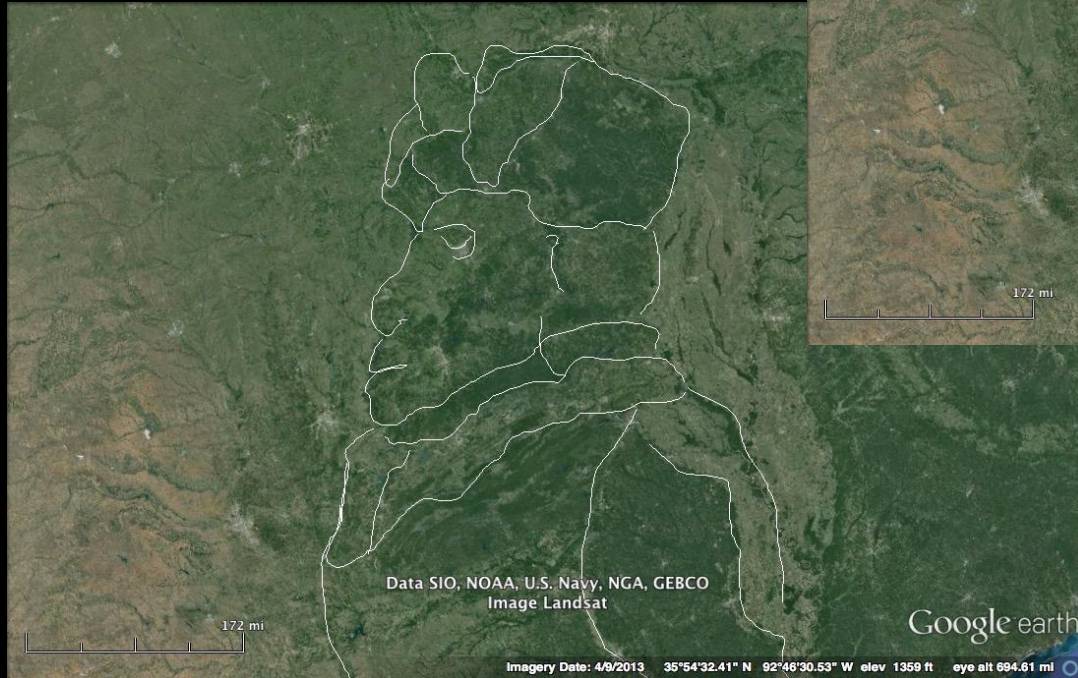
Madagascar



Idaho, USA



Springfield, Missouri USA



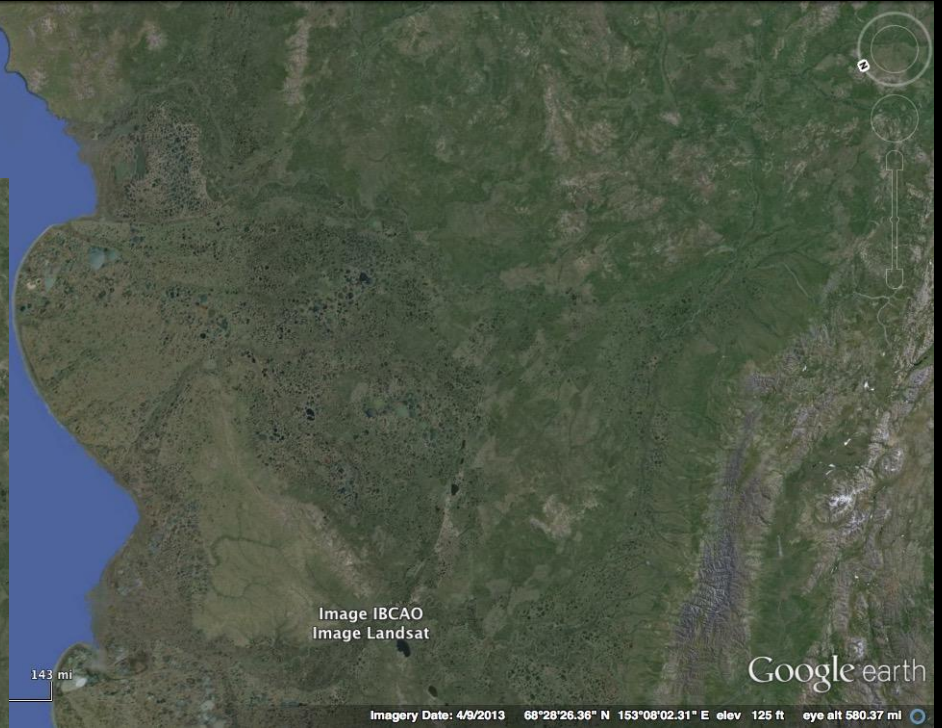
Brazilian Jungle South America

Brazilian Jungle Man
Write a description for your map.



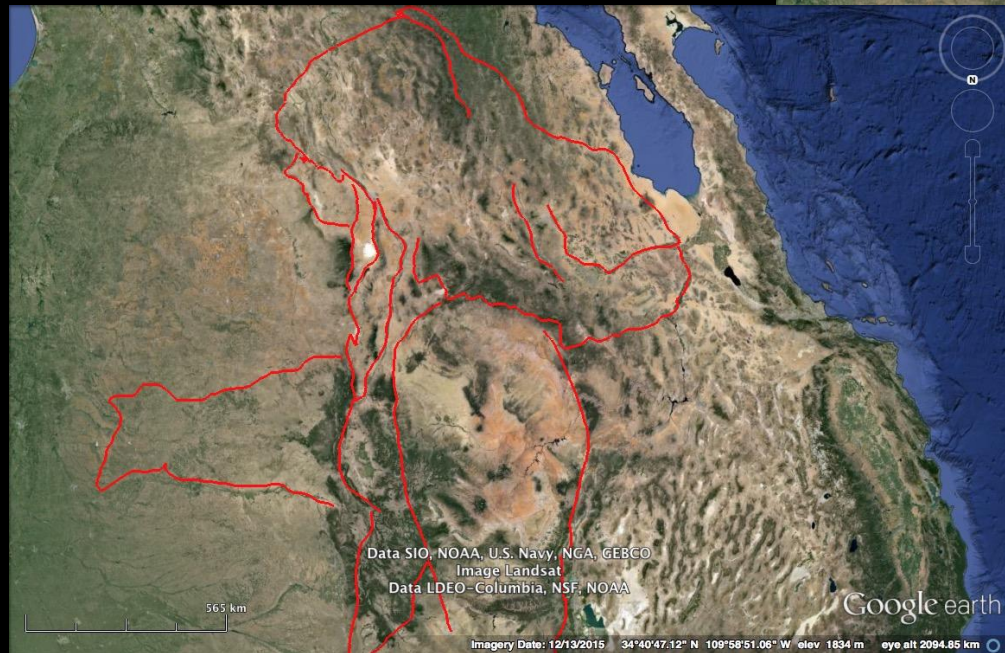
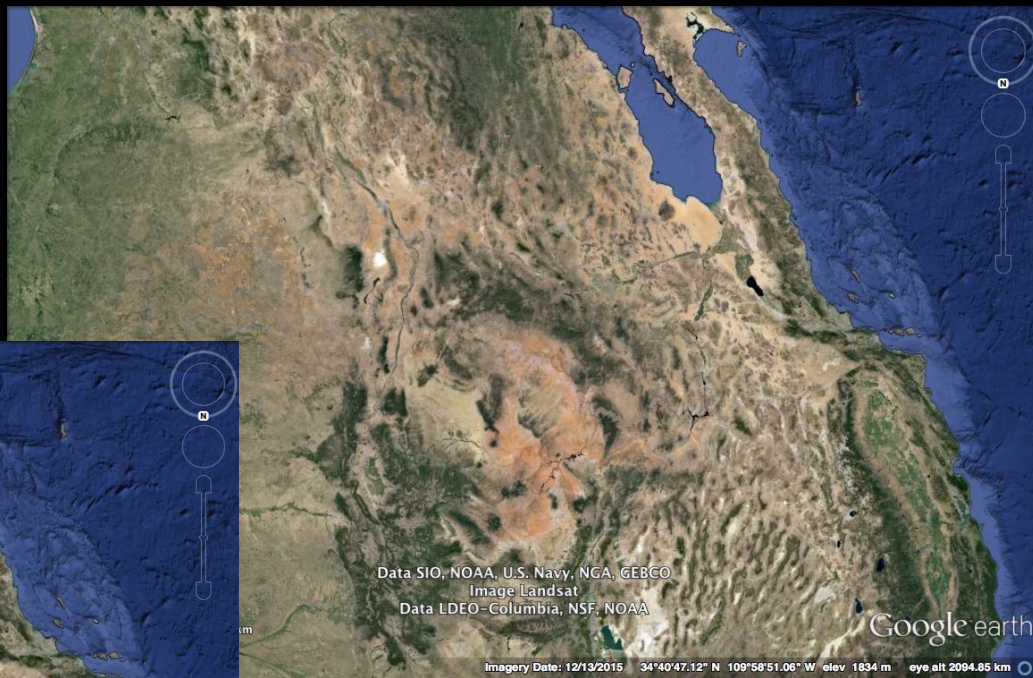
Brazilian Jungle Man
Write a description for your map.



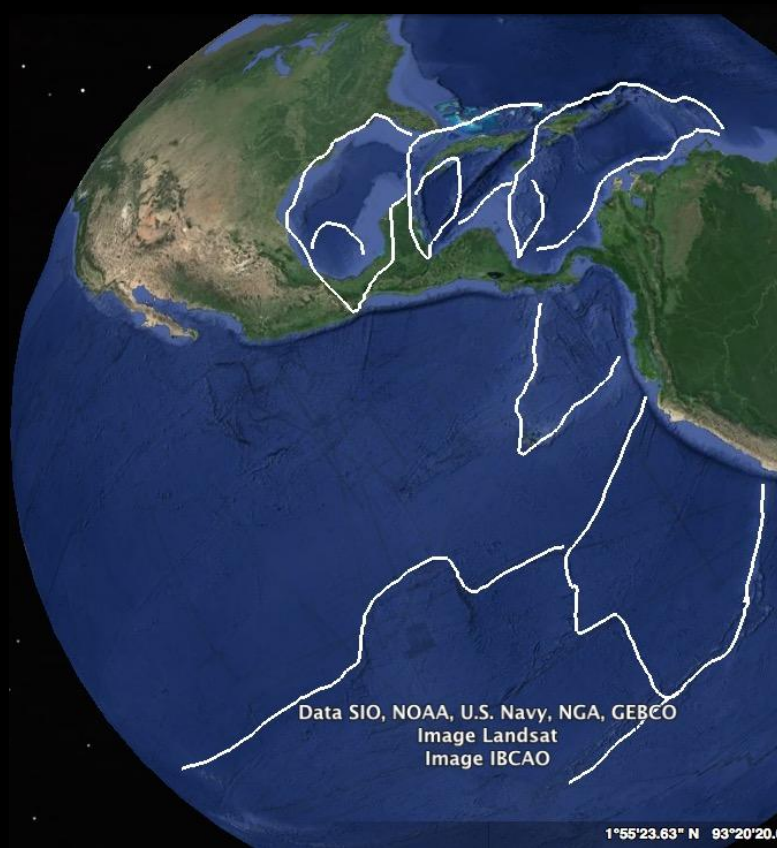


West Coast, USA

South central USA



Central America



Southwestern USA



Offering to the Americas



Data SIO, NOAA, U.S. Navy, NGA, GEBCO

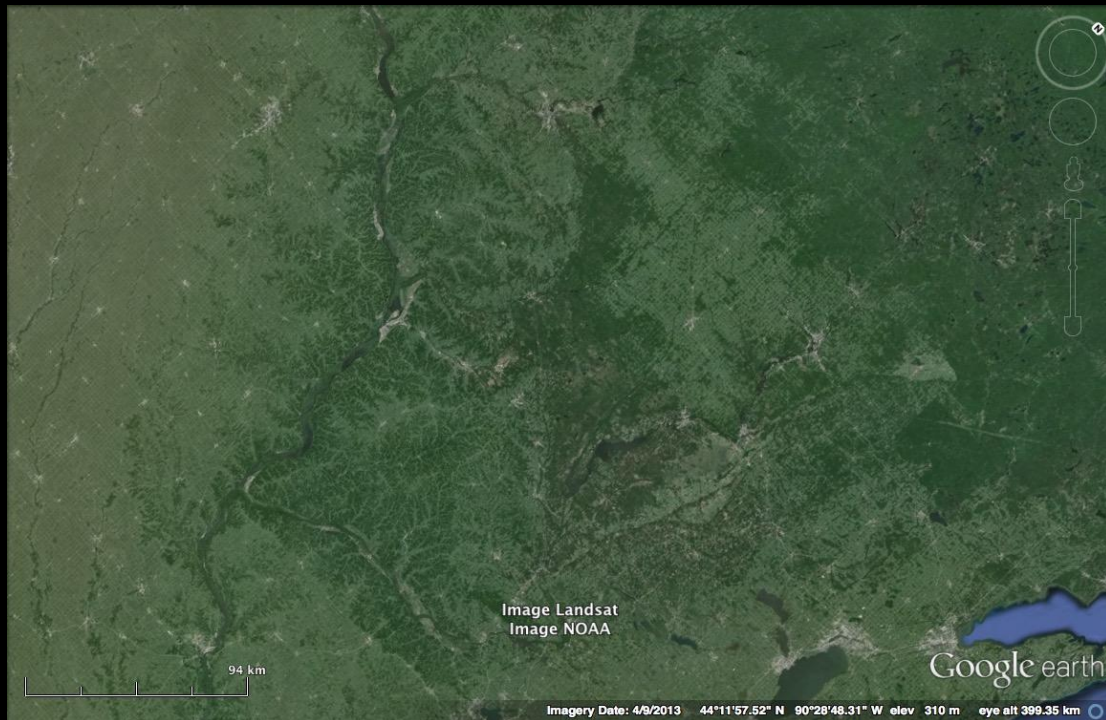
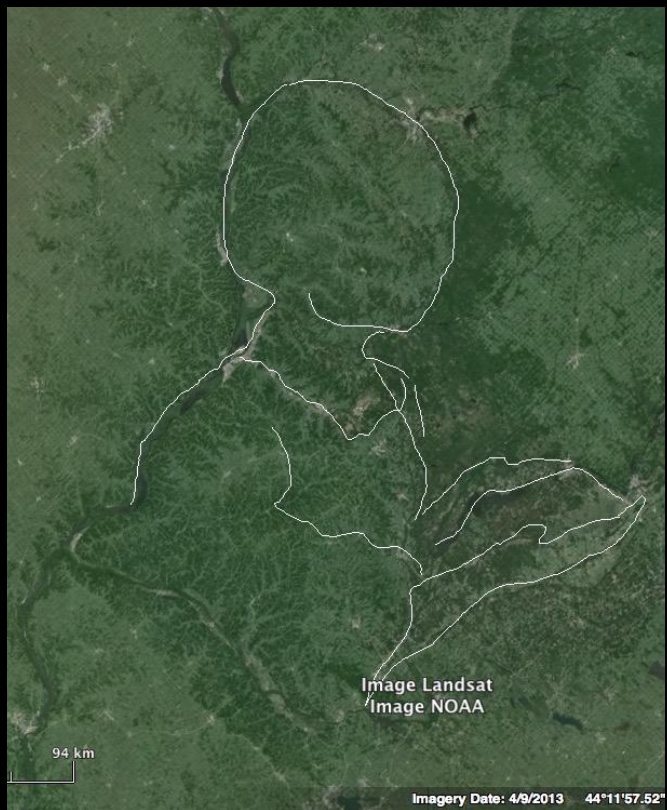
Imagery Date: 12/13/2015 23°24'06.25" N



Data SIO, NOAA, U.S. Navy, NGA, GEBCO

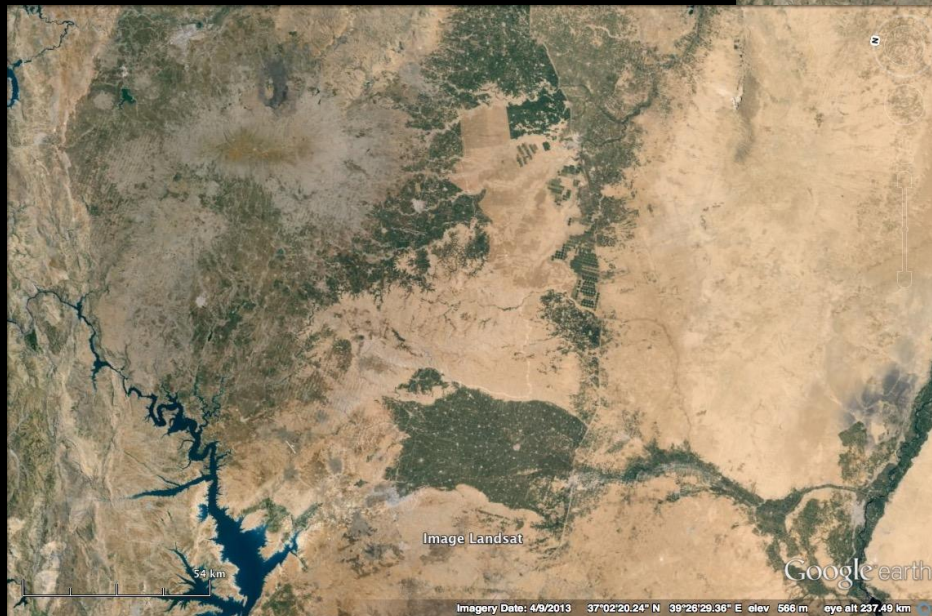
Imagery Date: 12/13/2015 23°24'06.25" N 73°56'53.23" W eye alt 16016.81 km

Google earth



Wisconsin, USA

Gobekli Tepe, Turkey



Earth's Moon



Image NASA / USGS / JAXA / SELENE



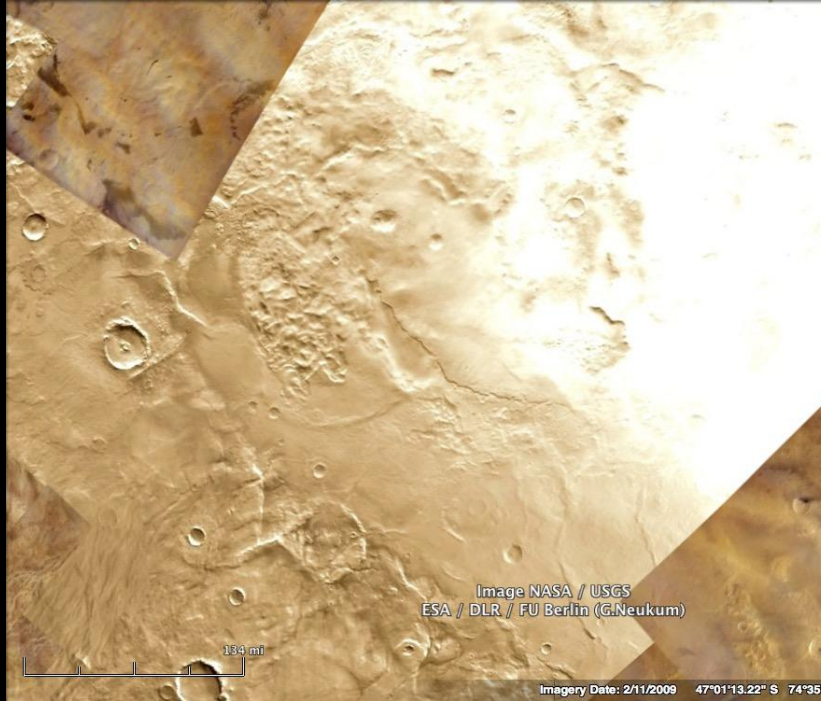
Image NASA / USGS / JAXA / SELENE

Google

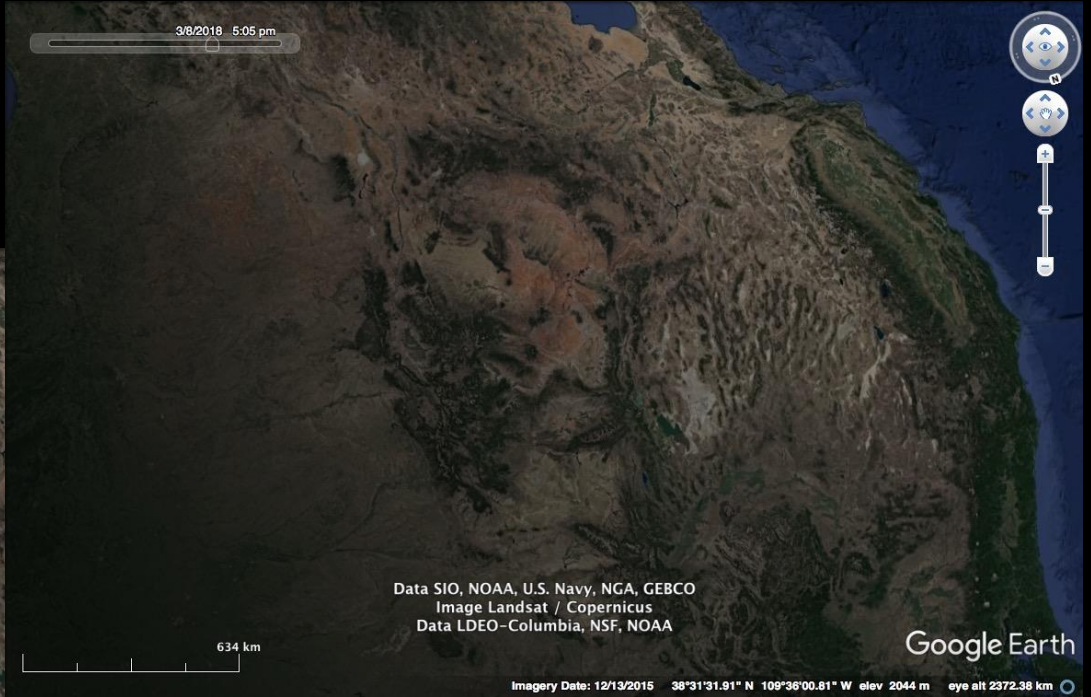
29°19'53.30" S 103°10'39.03" W eye alt 284

29°19'53.30" S

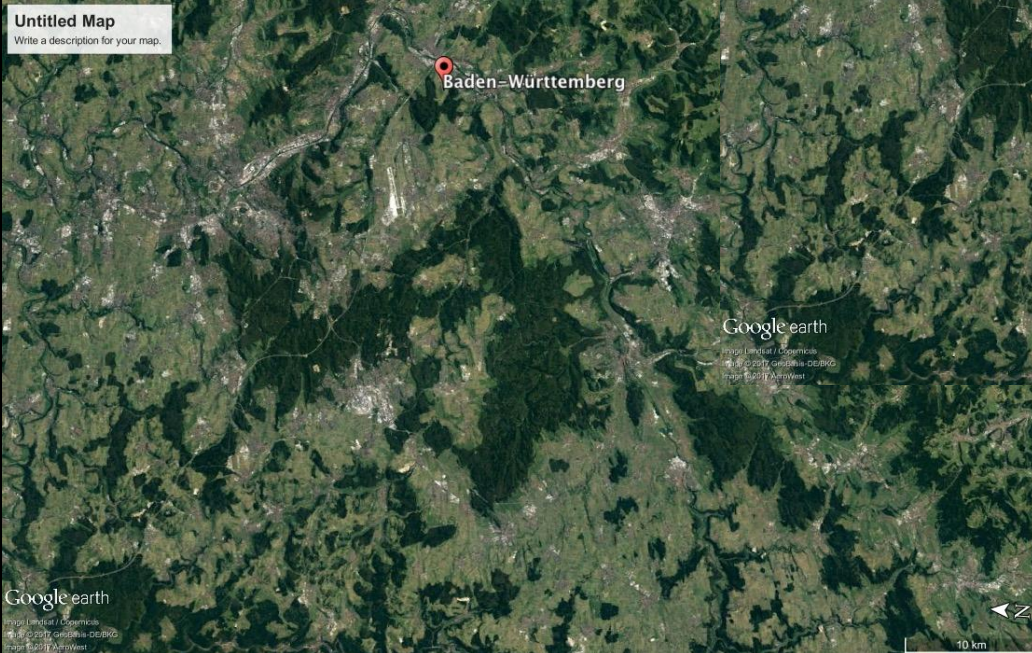
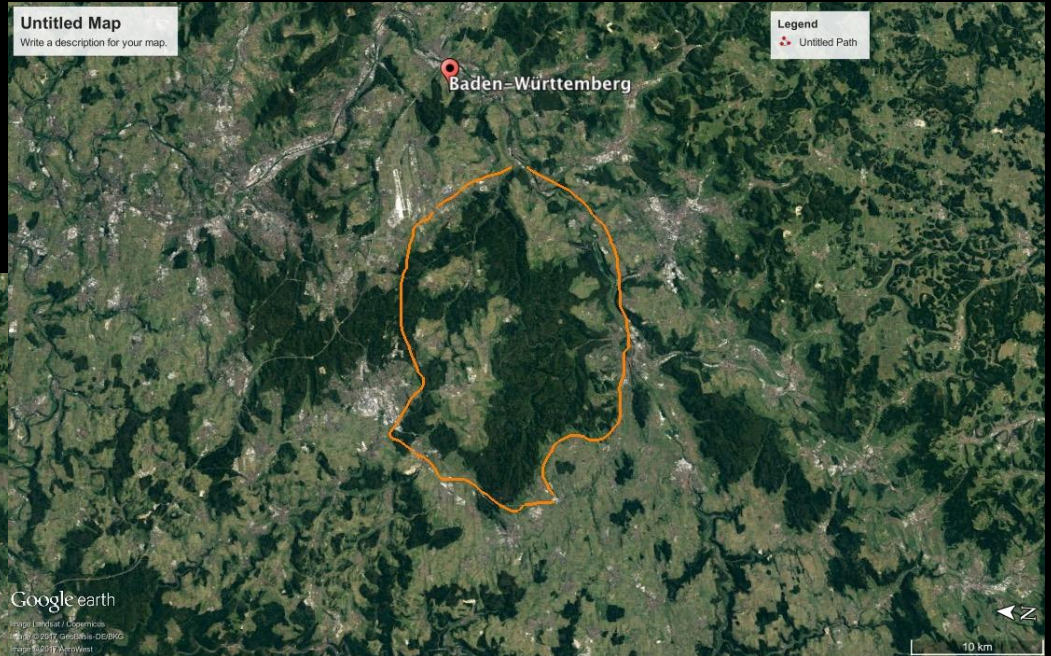
Mars



New Mexico, USA



Baden-Wuttemberg Germany Sasquatch



The Tip of Africa

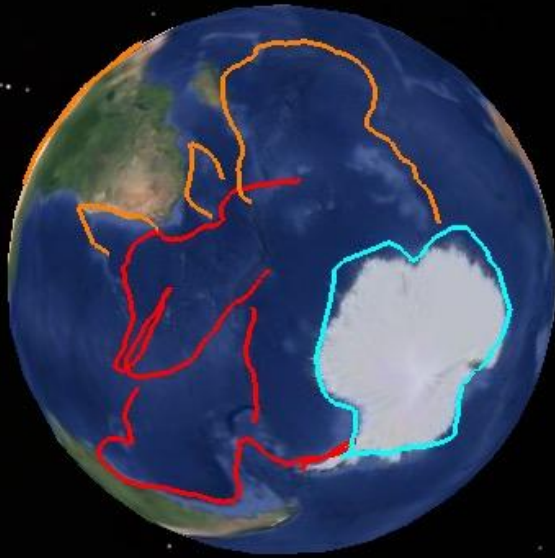
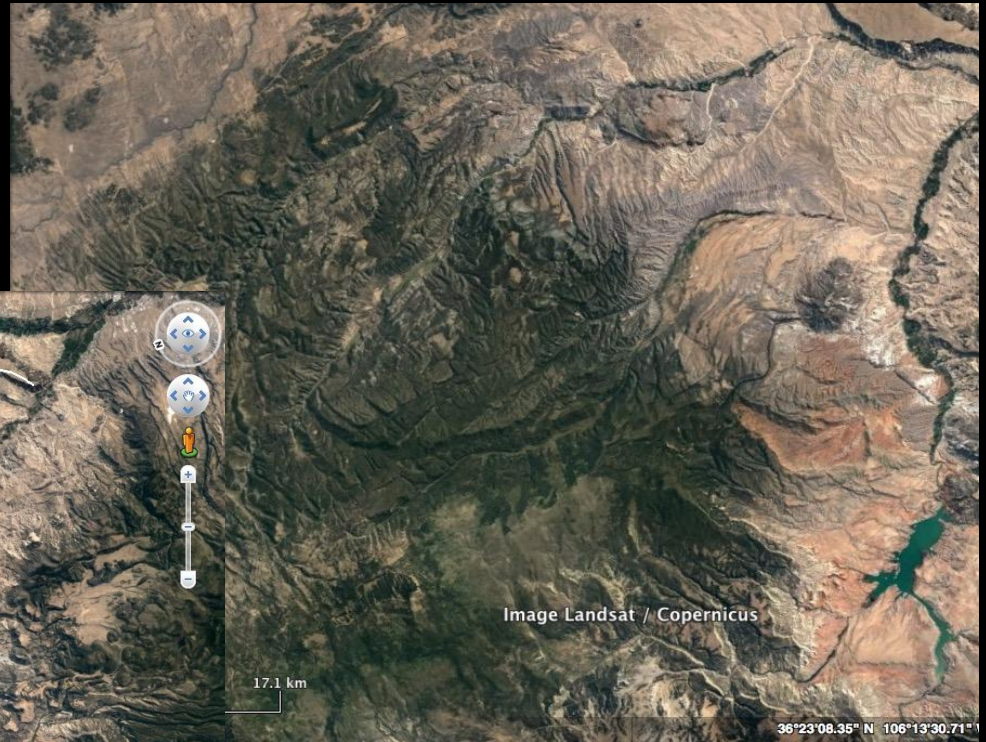


Image Landsat / Copernicus
Data SIO NOAA U.S. Navy NGA CERCO



Image Landsat / Copernicus

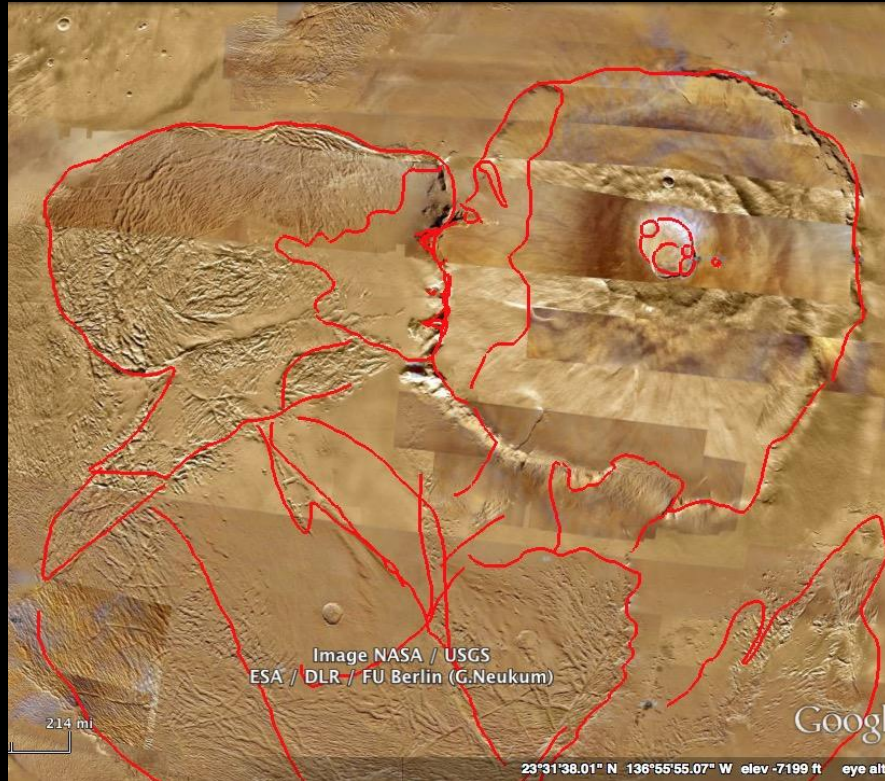
Detailed finger in New Mexico



Zeta in Europe



Olympus Mons, Mars



Olympus Mons, Mars closeup



Many of you archeoplanetography students will find that you can go back and begin to see other things you missed the first time.

Go ahead and try it.

Copyright 2018
Su Walker